

Employee Benefits

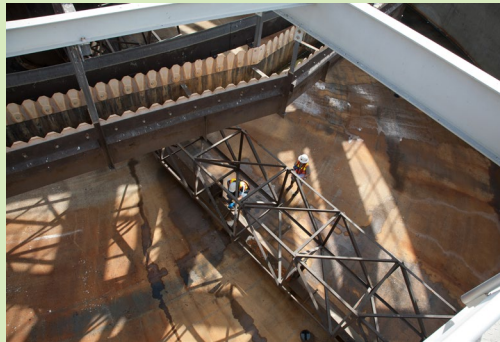
Regional San contracts with the County of Sacramento for its staff. As an employee of the County of Sacramento, you have a wide variety of benefits available. These benefits include:

- Vacation, Holidays, Sick Leave, and Parental Leave
- Retirement: Social Security, SCERS, and Retiree Health Savings Plan
- Health, Dental, Life, and Critical Illness Insurances
- Vision Benefits
- Employee Assistance Program
- Flexible Spending Account
- Health Savings Account
- Deferred Compensation
- Workers' Compensation
- On-site Fitness Facility

For more information about these benefits, please visit:

www.personnel.saccounty.net/Benefits/Pages/default.aspx

Maintenance Worker Jobs Available



Sacramento Regional Wastewater Treatment Plant

8521 Laguna Station Road
Elk Grove, CA 95758

Rev. July 2017

Seeking Qualified Candidates for

Maintenance Worker

www.regionalsan.com



Maintenance Worker

At Regional San, the Maintenance Worker is a single level position that may lead to entry level positions in other job classes used by Regional San, including: Mechanical Maintenance, Stationary Engineer, and Wastewater Treatment Plant Operator. Refer to job specification for additional details.

Regional San is currently hiring for this position:

Maintenance Worker

\$18.23 - \$22.16 Hourly

\$38,064 – \$46,270 Annually



Education and Experience

There are no education or experience requirements for this class. Minimum Age: 18 years.



Maintenance Workers at Regional San are responsible for performing a variety of unskilled and semi-skilled tasks that include:

- Performing safety inspections
- Cleaning of tanks, including digesters, primary tanks, secondary sedimentation tanks and sumps
- Performing some electric cart preventive maintenance
- Deragging pumps
- Housekeeping



About Regional San

Regional San owns and operates the regional wastewater conveyance system and the 1,000-acre Sacramento Regional Wastewater Treatment Plant (SRWTP), near Elk Grove, California. The conveyance system consists of a network of 169 miles of interceptor pipelines and 11 large pump stations that convey wastewater to the SRWTP. The SRWTP is one of the largest wastewater treatment plants on the west coast.

Regional San is undertaking a \$1.5 billion effort—called the EchoWater Project—to take our region's wastewater treatment to a whole new level. When completed, the EchoWater Project will be capable of meeting our region's needs and protecting our region's waterways for generations to come.

This is an opportunity to be a part of a growing organization, participate in a team atmosphere, and work on a wide variety of mechanical equipment.

To learn more, visit www.RegionalSan.com.



For More Information

For more information regarding maintenance positions at Regional San contact:

Darren Roth
916-875-9433

Apply Online

To see all requirements and apply online, visit:
www.saccountyjobs.net

Our Mission

Our mission is to protect public health and the environment through reliable and safe conveyance, treatment and disposal of wastewater in the most cost-effective manner possible, now and in the future.